

Reliable products from a manufacturer you can trust

The machines can be equipped with the following optional accessories to fit specific cleaning applications:

- Synthetic dust bags to all models
- HEPA filter
- Cartridge filter
- Turbo nozzle (GD 320)
- Aluminium tubes
- Grooming brushes
- Wide selection of floor nozzles
- Front nozzle (50 & 75 litre-versions)

For further information concerning the optional accessories, please contact your local Nilfisk-Advance dealer

TECHNICAL SPECIFICATIONS



Description	Unit	GD 320	GWD 320	GWD 335	GWD 350	GWD 375	GWD 350-2	GWD 375-2
IP Protection class	-	-	IP24	IP24	IP24	IP24	IP24	IP24
Rated power*	W	1350	1350	1350	1350	1350	2700	2700
Suction power end of tube	W	280	280	280	280	280	425	425
Airflow	l/sec	37	37	37	42	42	60	60
Vacuum at nozzle	kPa	22	22	22	22	22	22	22
Sound pressure level (BS 5415)	dB(A)	62	64	64	64	64	66	66
Tank capacity	litres	-	20	35	50	75	50	75
Dust bag capacity	litres	10	13	17	30	34	30	34
Main filter area	cm ²	700	1350	1350	2260	2260	2260	2260
Length x width x height	mm	44x41x57	44x41x57	44x41x72	64x60x89	64x60x100	64x60x89	64x60x100
Weight	kg	7,5	7,7	8	20	20,5	21,5	22

Specifications and details are subject to change without prior notice.

* Variants in some countries

TECHNICAL SPECIFICATIONS



Description	Unit	GWD 320C	GWD 335C	GWD 335 Steel	GWD 375 Steel	GWD375-2
Plug for electric tools*	W	2000	2000	-	-	-
IP Protection class	-	IP24	IP24	IP24	IP24	IP24
Rated power*	W	1350	1350	1350	1350	2700
Suction power end of tube	W	280	280	280	280	425
Airflow	l/sec	37	37	37	42	60
Vacuum at nozzle	kPa	22	22	22	22	22
Sound pressure level (BS 5415)	dB(A)	64	64	64	64	66
Tank capacity	litres	20	35	35	75	75
Dust bag capacity	litres	13	17	17	34	34
Main filter area	cm ²	1350	1350	1350	2260	2260
Length x width x height	mm	44x41x57	44x41x72	44x41x72	64x60x100	64x60x100
Weight	kg	9	9,5	8,5	21,5	23

Specifications and details are subject to change without prior notice.

* Variants in some countries

www.nilfisk-advance.com



Nilfisk-Advance A/S
 Sognevej 25
 DK-2605 Brøndby
 Denmark
 Tel.: +45 43 23 81 00
 Fax: +45 43 43 77 00
 mail@nilfisk-advance.dk
 www.nilfisk-advance.com

Wet & Dry Vacuum Cleaners

GWD 300 series

The Quality



you expect



**Nilfisk
Advance**

setting standards

Functional vacuums with a proven pedigree



A range of 10 machines to meet a variety of professional applications

MODULAR DESIGN FOR VACUUMING FLEXIBILITY

The GWD 300 range of wet and dry professional vacuums incorporates all of the technical excellence and attention-to-detail that have made Nilfisk-Advance the brand of choice amongst cleaning professionals around the globe.

All models are based on a modular design, which means that you can easily switch platforms if required. The Craftsman variants include a power socket for electric tools, automatic on/off, and delayed action shut down on automatic mode. The series also includes 35 and 75 litre durable steel tank versions for picking up oil, soot or similarly heavy-duty applications.

The GWD 300 range features no-frills practical solutions to meet everyday vacuuming needs, and is based on our commitment to lowering the total costs of cleaning.

The smart solution

- A range of vacuums to meet most everyday wet and dry pick-up needs
- Modular design allows easy and flexible interchange of platforms
- Quality features provide better productivity
- Craftsman's version with power socket, automatic on/off and delayed action
- Designed to be operator friendly
- Fast access to float basket and filters for cleaning and maintenance
- Steel version available for heavy-duty use. Available with 35 or 75 litre container, the larger version is also offered with one or two motors to suit all applications.



The handle is adjustable to suit the operator and tilts for compact storage



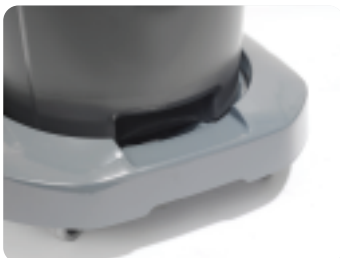
Large latches for ergonomic use and easy access. On the larger models (50 & 70 litre-versions) the latch is designed to be in two positions, which makes it easy to put the motor top on/off



Empty the tank easily and ergonomically via a drain hose (GWD 375)



Compact and well designed parking position for handle and tools makes storage and transport easy



An ergonomic grip is built-in to facilitate the tip & pour tank emptying system (50 & 75 litre-versions)



Two large lifting handles give a good grip for easy removal of the motor top. They also serve as a convenient way to store the cable.